



GMT MONTHLY MEMBERSHIP PROGRESS REPORT

Results as of: 5/31/2020

Multiple District 11

LOCATION: MICHIGAN

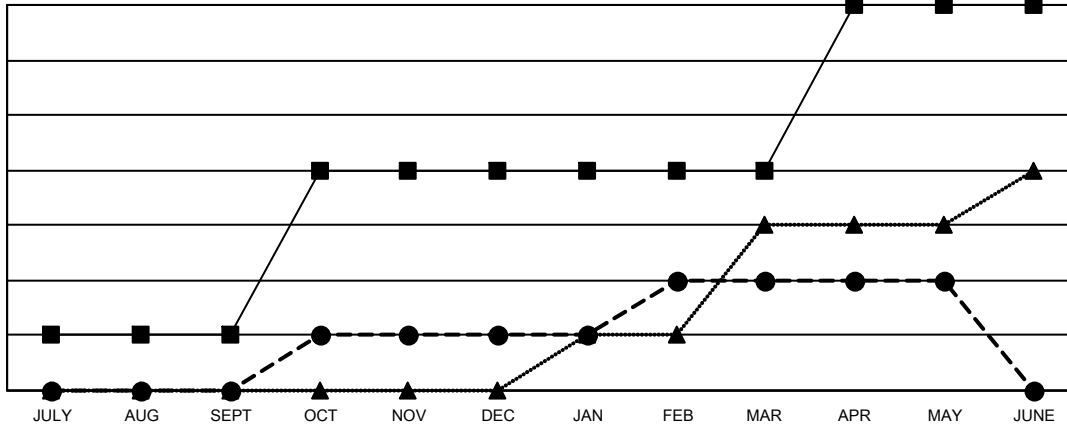
GMT: OPEN

GMT CA 1

Clubs			
RESULTS FOR 2019-2020			
QUARTER	NEW CLUB GOAL	NEW CLUBS	DROPPED CLUBS
JULY/AUG/SEPT	1	0	2
OCT/NOV/DEC	3	1	9
JAN/FEB/MAR	0	1	0
APR/MAY/JUNE	3	0	0

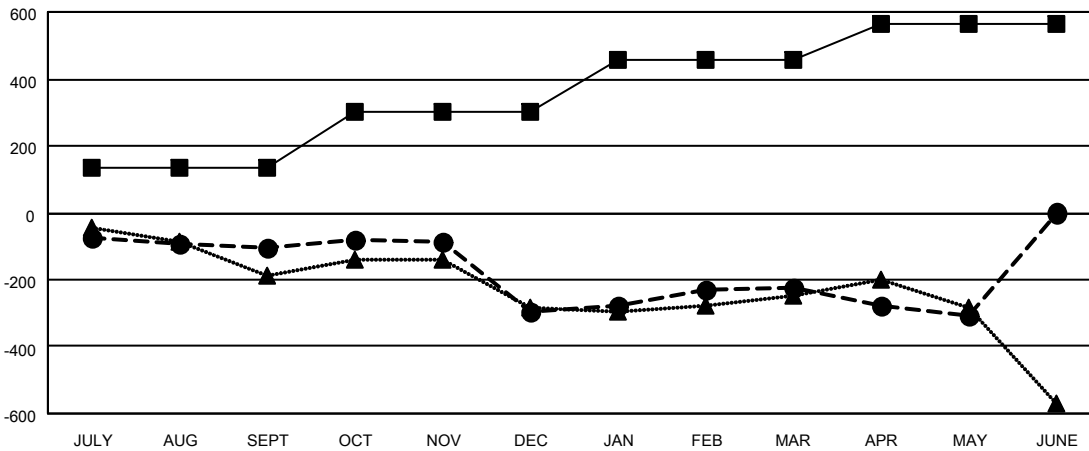
Members			
RESULTS FOR 2019-2020			
QUARTER	MEMBER GROWTH NET GOAL	MEMBER GROWTH ACTUAL	DROPPED MEMBERS ACTUAL (including transfers)
JULY/AUG/SEPT	135	244	306
OCT/NOV/DEC	165	265	433
JAN/FEB/MAR	155	343	227
APR/MAY/JUNE	110	56	133

GOALS AND ACTUAL NEW CLUBS CUMULATIVE



- - CURRENT YEAR GOALS FOR NEW CLUBS
- - CURRENT YEAR ACTUAL NEW CLUBS
- ▲ - LAST YEAR ACTUAL NEW CLUBS

GOALS AND ACTUAL MEMBERS CUMULATIVE



- - MEMBER GROWTH NET GOAL
- - MEMBER GROWTH ACTUAL
- ▲ - LAST YEAR MEMBERSHIP ACTUAL

DROPPED CLUBS: 11	
DROPPED MEMBERS	
DECEASED	198
CLUB CANCELLED	97
OTHER	799
TOTAL	1,094

241 CLUBS OF 471 ADDED 1 OR MORE NEW MEMBERS

[CLICK HERE FOR CUMULATIVE MEMBERSHIP DATA](#)

GENDER DISTRIBUTION	
MALE	8,432 (68.66%)
FEMALE	3,849 (31.34%)
TOTAL FAMILY UNIT MEMBERS	2,424
FAMILY MEMBERS PAYING HALF DUES	1,235